



INTRODUCING THE 2010 RESEARCH FELLOWS

VOLUME I ISSUE 7

FALL 2010

Thomas Duke

The Five Point Spread

- 3rd Year Clinical Student in PhD Program
- Research Fellow for Cynthia Eriksson in the Headington Lab
- Working on completing his Master's Project based on his research in Uganda in collaboration with Columbia University and the Antares Foundation
- Would love to be a great clinician within the context of a multifaceted career
- Would probably kick your butt at disc golf

MEETING THOMAS...

In a different life, Thomas Duke might have become a world famous Ultimate Frisbee sports icon. However, his burgeoning college career was cut short by his move into clinical psychology.

Packing his bags he came to Fuller and promptly met the love of his life, Kate Harrell (now Duke). They tied the knot in August and with 8 years of school between the two of them, it's only a matter of time before Thomas finally

returns to Frisbee ...

A good day for Thomas, when he's not traveling to foreign countries doing cutting edge research, is spent with a good friend, a little outside physical activity and some quality time with his wife!

Currently he is working with Cynthia Eriksson who he likens to a cup of coffee with a scone—professional yet warm and approachable. This is good, for any researcher who

deals with trauma, stress, resilience and coping on a daily basis needs to possess that combination of caffeine and sugar.

Originally a PsyD student, Thomas Duke fell in love with research and now is pursuing a PhD. Ultimately he dreams of being a great clinician—who also teaches and is engaged in research. TRI thinks he will definitely surpass his goals.

REGARDING RESEARCH...

Thomas joined Dr. Eriksson's lab upon arriving at Fuller and has loved the different foci of the lab, such as trauma, stress, coping and resilience in aid workers, missionaries and other ministry workers.

He represented Fuller in a collaboration with Columbia University in Uganda. While there he was involved in almost every aspect of the project, contacting local NGOs, coordinating interviews, training local facilitators, and spending many hours entering data. The

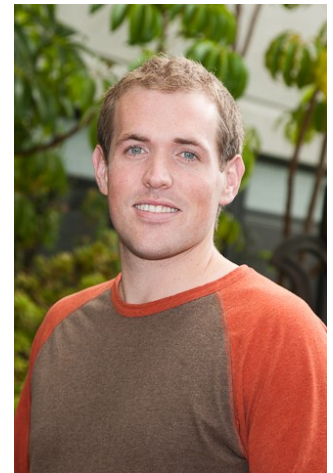
Uganda research will be the basis for his master's project, which should be complete soon. His work in the lab over the past year has resulted in being an author on several presentations at major conferences over the past year.

As a research fellow for the Headington Lab, Thomas will be involved in almost every single project, conducting interviews, coding, continuing the lab's collaboration with Columbia University, putting in work towards collaboration

with PFPS and aid worker(s) in Haiti, and also beginning to lay the foundations for his dissertation.

Long term, he hopes to continue with clinical work, consultation, teaching and research.

He graduated from the University of Arkansas in 2007 with a double major in communication and geography.



Thomas Duke

Presentations & Publications

Eriksson, C. B. & Duke, T. D. (in press). Ethics in providing psychological first aid. In R. K. Sanders (Ed.), *Christian Counseling Ethics: A Handbook for Therapists, Pastors and Counselors*. Downers Grove, IL: InterVarsity Press.

Min, J., Yeh, D-A., Duke, T. C., Tilahun, B. S., Kim, A. H., Ansloos, J. P., Tomosada, M., Liu, R. K., Richardson, K., & Eriksson, C. B. (2009, Nov.). *Adverse childhood experiences and religious coping in urban youth workers*. Poster presented at the 25th annual meeting of the International Society for Traumatic Stress Studies. Atlanta, GA.

Yeh, D-A., Frederick, N. J., Wilkins, A. M., Liu, R. K., Duke, T. C., Martinez Reyes, D., Ansloos, J. P., & Eriksson, C. B. (2009, Nov.). *Moving ministry workers through spiritual crises related to traumatic experiences*. Poster presented at the 50th annual meeting of the Mental Health and Missions Conference. Angola, IN.